



# LiteShow4™

Wireless Presentation Adapter

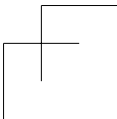
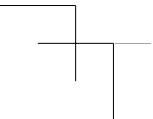
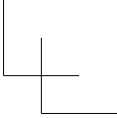
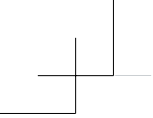
Model Name: INLITESHOW4



---

## Quick Installation Guide

Version: 1.0  
091INF510001  
Date: July 24, 2014

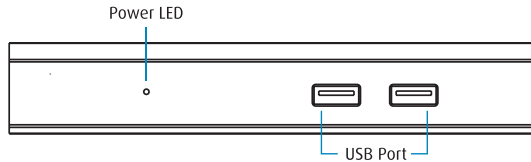


## 1. Package Contents

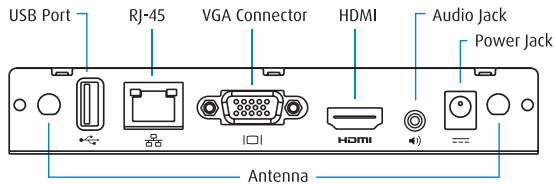
- LiteShow 4 module
- LiteShow USB token
- Power Adapter (DC +5V, 2.5A)
- Antenna (2)
- Mounting hardware
- Quick Installation guide with warranty card
- Quick Installation guide for mobile applications

## 2. Physical Details

- Front Panel

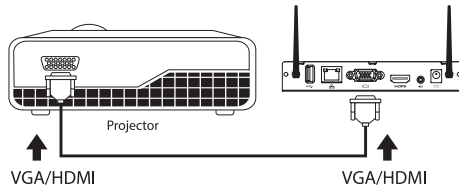


- Rear Panel



### 3. Installation for Windows and Mac

- 1) Attach the antennas to LiteShow, connect a VGA or HDMI cable between the LiteShow and your display, and turn on the display.



- 2) Plug in LiteShow. The LiteShow instructions below will display on the display when LiteShow is ready for use.

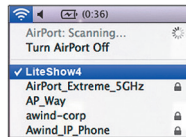


- 3) Download the Utility from the LiteShow USB token, or download from the web following these instructions:
- Verify that your computer's wireless connection is enabled and connect to the LiteShow wireless network.

#### Windows 7/8

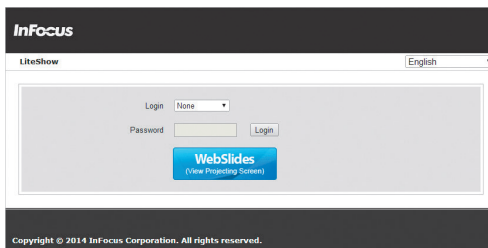


#### Mac OSX

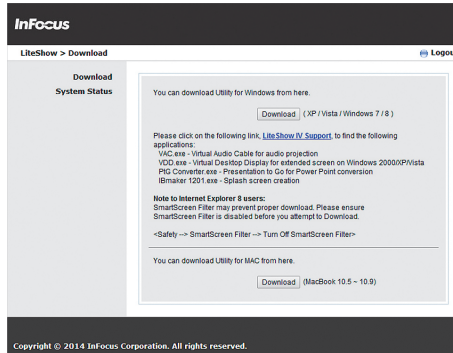


- Open your browser. Although the LiteShow page should display automatically, you can also enter the IP address displayed on the display into your web browser.

**Note:** The default IP address of LiteShow is 192.168.100.10.



- c) Login as “None” (no password is required). Click **Download** for the appropriate utility (Mac or Windows), and follow the Installation Wizard instructions.

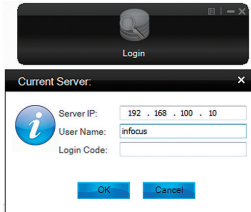


- 4) Once the installation is complete, a LiteShow shortcut will be available on your desktop.

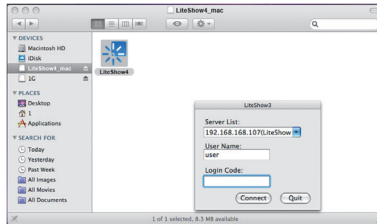



- 5) Click the LiteShow shortcut and enter the **Login Code** visible on the display.

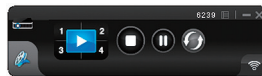
Windows 7/8



Mac OSX



- 6) Click the  button to start projection.  
**Note:** To enable QuadView projection, click the desired Quadrant button (1-4).



## Warranty Policy

Before contacting Technical Support, please review the User's Manual for this product. If you are unable to resolve the problem and/or if the product is damaged, please contact InFocus support at [www.infocus.com/support](http://www.infocus.com/support).

### **The warranty does not cover the following:**

1. Damage caused by accident, overloading, misuse, improper use or other types of damage not related to this product quality or design.
2. The product is damaged by unforeseeable natural disasters (flooding, fire hazard, earthquake, typhoon or thunder) or due to human error.
3. Attempt to open product housing, dismantle, attach other items or retrofit without written permission from InFocus.
4. Consumables or components.
5. Serial number on the product or component has been removed or damaged.
6. The product warranty is outdated.
7. Claims without presenting a warranty certificate, or if presented but the warranty certificate is not properly marked with the date of purchase, stamped by the authorized agent or the marked information has been tampered with.

## Warranty Services

If any fault has developed during the warranty period, after confirmation by InFocus, we will (1) Repair the product directly or (2) Replace the product with a new or remanufactured product, at InFocus' discretion.

Applicable to all products; when sending the product for services, you need to provide:

1. Your name, address and telephone number.
2. The warranty information and a proof of purchase.



**Disclaimer**

- We will not be responsible if it's believed the damage is caused by the customer, or other personnel, deliberately or by accident.
- We will not be responsible for any loss caused by continuous use or inability to use the product.
- We will not be responsible for costs due to damage other than repairs to InFocus products. Any damage or malfunction caused to other machines linked to InFocus products is not covered by this warranty.